

ICC **INDOFINE Chemical Company, Inc.**

121 Stryker Lane, Bldg. 30, Suite 1 • Hillsborough, NJ 08844 • U.S.A.

Phone: (908) 359-6778 • FAX: (908) 359-1179

website: www.indofinechemical.com

e-mail: chemical@indofinechemical.com

CERTIFICATE OF ANALYSIS

Catalog Number: 06-374

Product Name: **CEPHAELINE**
(Desmethylemetine; Dihydropsychotrine; Alangine B)

CAS Number: [483-17-0]

Lot Number: 1903222

Chemical Formula: C₂₈H₃₈N₂O₄

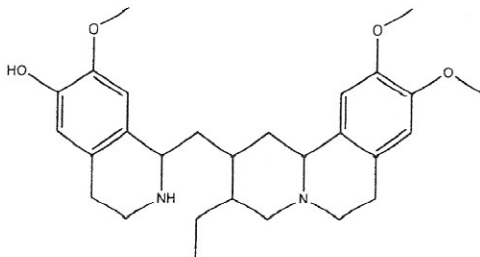
Molecular Weight: 466.62

Appearance: Yellow powder

Loss on Drying: 1.64%

Storage: Store in a cool, dry place

Purity(HPLC): 97.78%



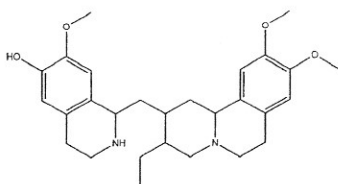
Prepared by:
Ramesh Mandadi
Ramesh Mandadi
Director of Operations

Reviewed and approved by:
Sujata Moton
S. Moton
VP



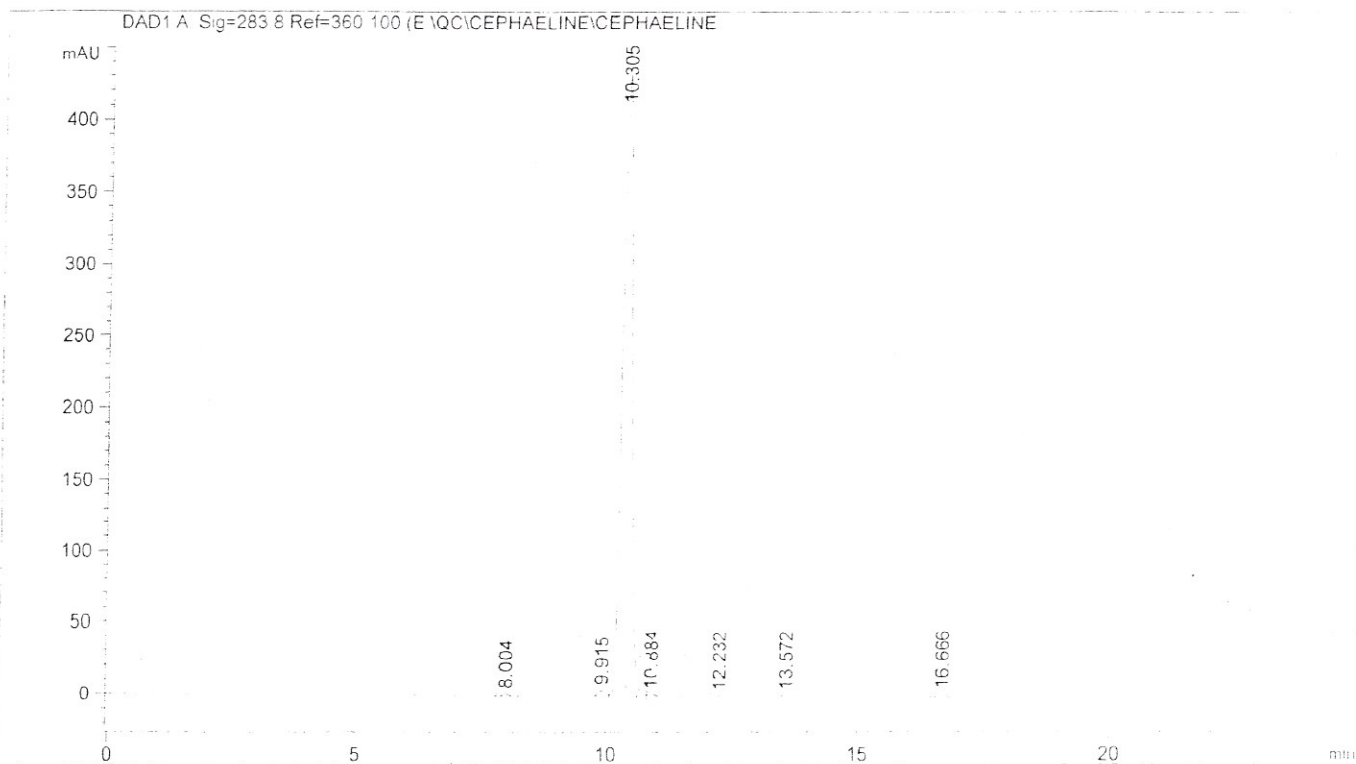
INDOFINE Chemical Company, Inc.

121 Stryker Lane, Bldg. 30
Hillsborough, NJ 08844 USA
Phone: (908) 359-6778; Fax: (908) 359-1179



HPLC ANALYSIS

Catalog No.: 06-374
Product Name: Cephaeline
Lot No.: 1903222



#	min.	min	nAUs	mAU
1	8.004	8.004	13.07564	1.43777
2	9.915	9.915	43.23214	4.38135
3	10.305	10.305	471.07114	47.10711
4	10.684	10.684	1.41034	1.41034
5	12.232	12.232	7.41034	0.738148
6	13.572	13.572	14.01034	1.21137
7	16.666	16.666	13.01034	1.0375

440.850

Prepared by:
Ramesh Mandadi
Ramesh Mandadi
Director of Operations

Reviewed and Approved by:
Sujata Moton
Sujata Moton
VP